



# MONTHLY MEMBERSHIP PROGRESS REPORT

District 321B2

Results as of: 6/30/2015

GMT: V S Kukreja

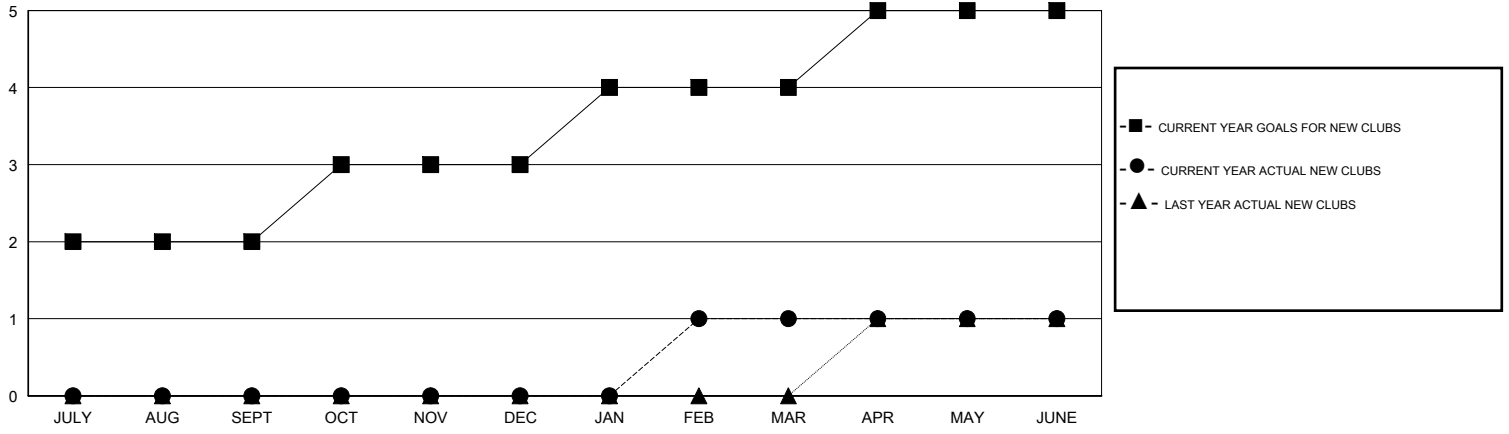
LOCATION INDIA

GMT CA 6

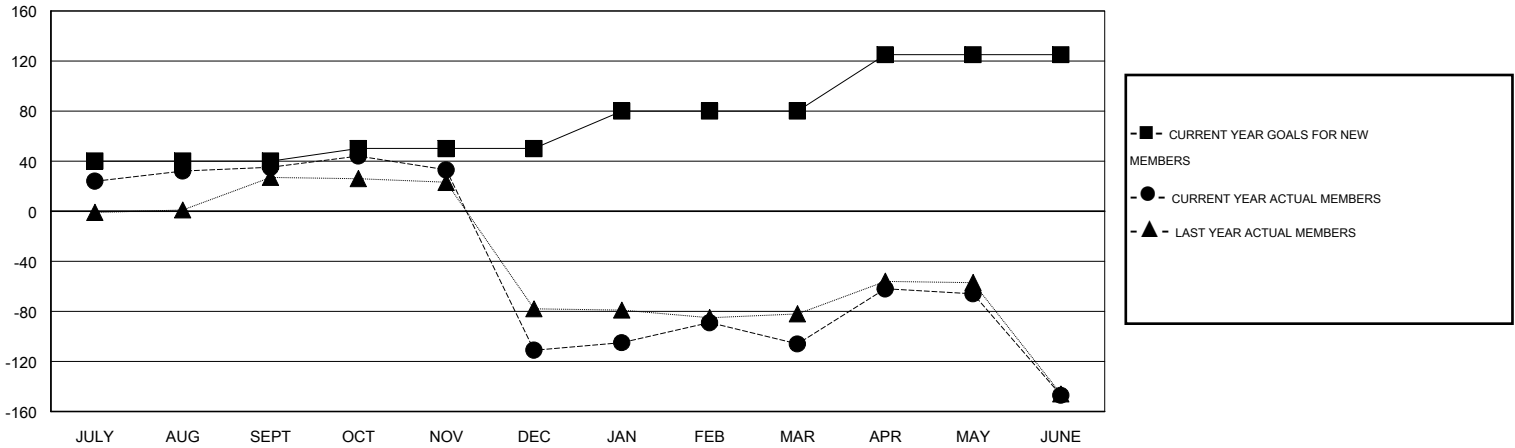
Clubs				
RESULTS FOR 2014-2015				
QUARTER	NEW CLUB GOAL	NEW CLUBS	DROPPED CLUBS	NET GAIN/LOSS
JULY/AUG/SEPT	2	0	0	0
OCT/NOV/DEC	1	0	4	-4
JAN/FEB/MAR	1	1	2	-1
APR/MAY/JUNE	1	0	1	-1

Members				
RESULTS FOR 2014-2015				
QUARTER	NEW MEMBER GOAL	CHARTER AND NEW MEMBERS ADDED	DROPPED MEMBERS	NET GAIN/LOSS
JULY/AUG/SEPT	40	48	13	35
OCT/NOV/DEC	10	23	169	-146
JAN/FEB/MAR	30	39	34	5
APR/MAY/JUNE	45	56	97	-41

GOALS AND ACTUAL NEW CLUBS CUMULATIVE



GOALS AND ACTUAL MEMBERS CUMULATIVE



DROPPED CLUBS: 7
------------------

23 CLUBS OF 43 ADDED 1 OR MORE NEW MEMBERS

GENDER DISTRIBUTION	
MALE	774 (72.68%)
FEMALE	291 (27.32%)

DROPPED MEMBERS	
DECEASED	4
CLUB CANCELLED	194
OTHER	115
<b>TOTAL</b>	<b>313</b>

[CLICK HERE FOR HEALTH ASSESSMENT DATA](#)

FAMILY UNIT MEMBERS	512
HEAD OF HOUSEHOLD	220
NON-HEAD OF HOUSEHOLD	292